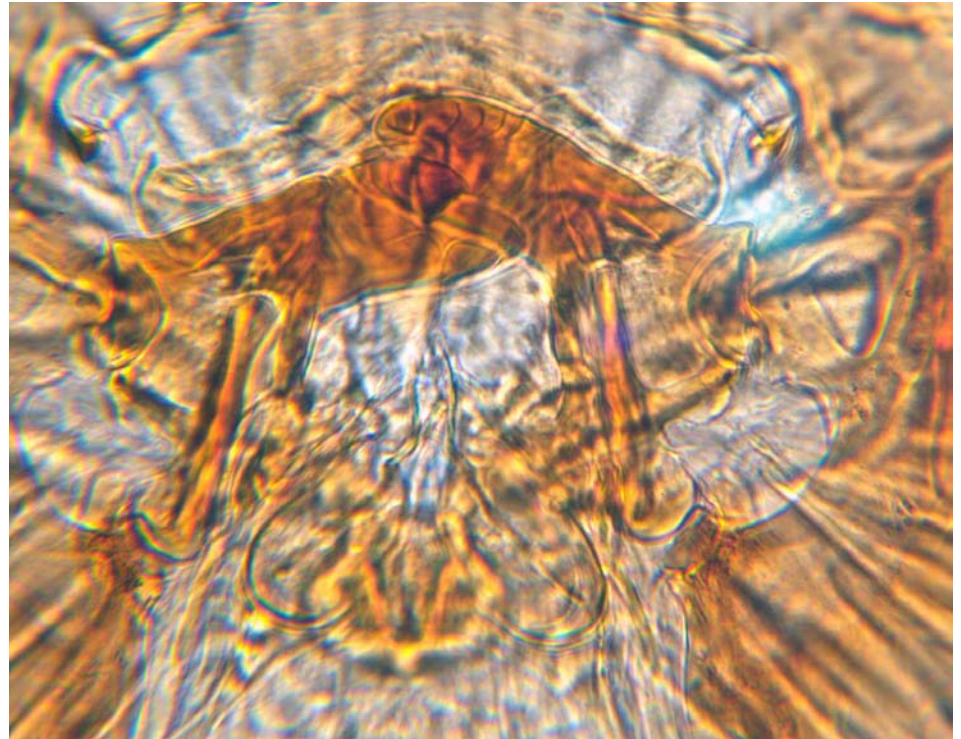
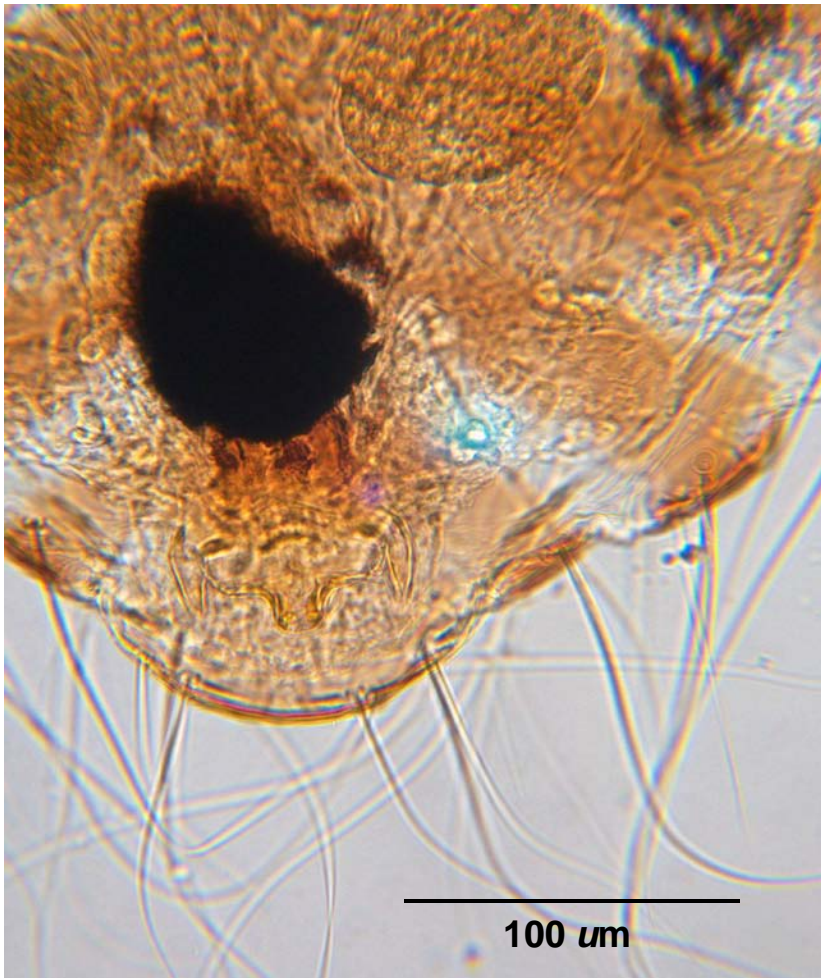


Philopterus sp.; male (left), female (right).

1.42 mm ← Total body length → 1.52 mm



Philopterus sp.; male genitalia (left), mandibles (right).



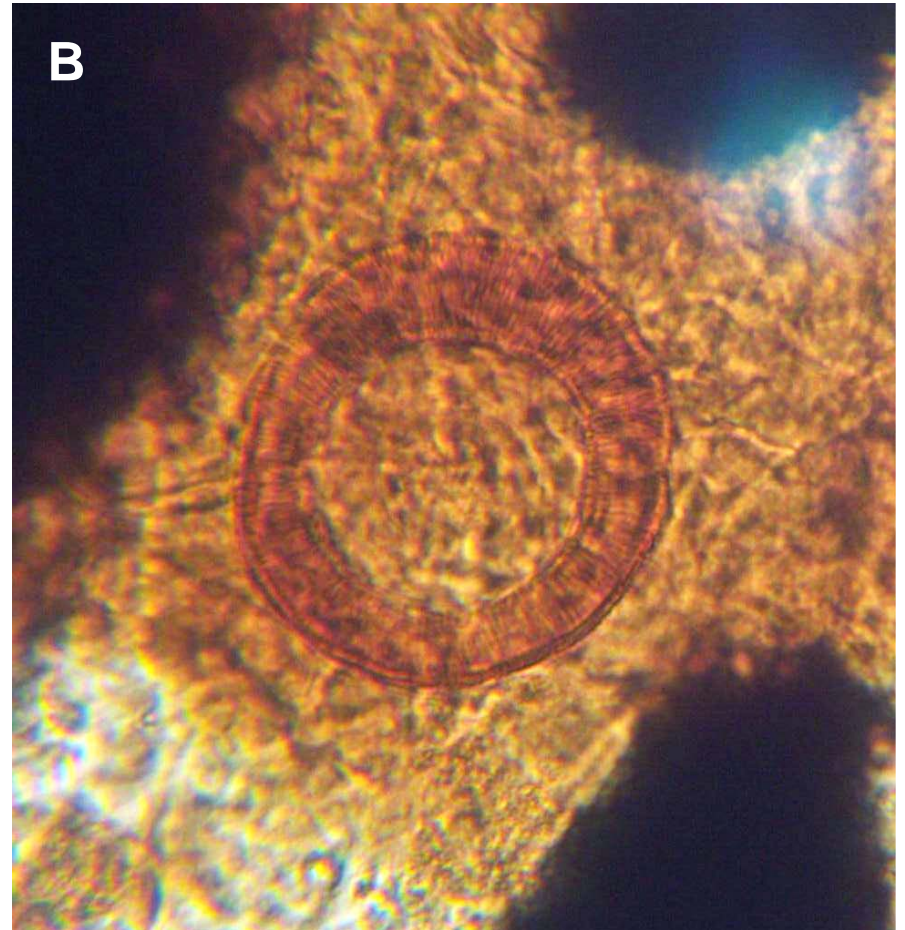
Phlopterus sp.; male, paratergal plates (3rd abdominal segment; arrow).



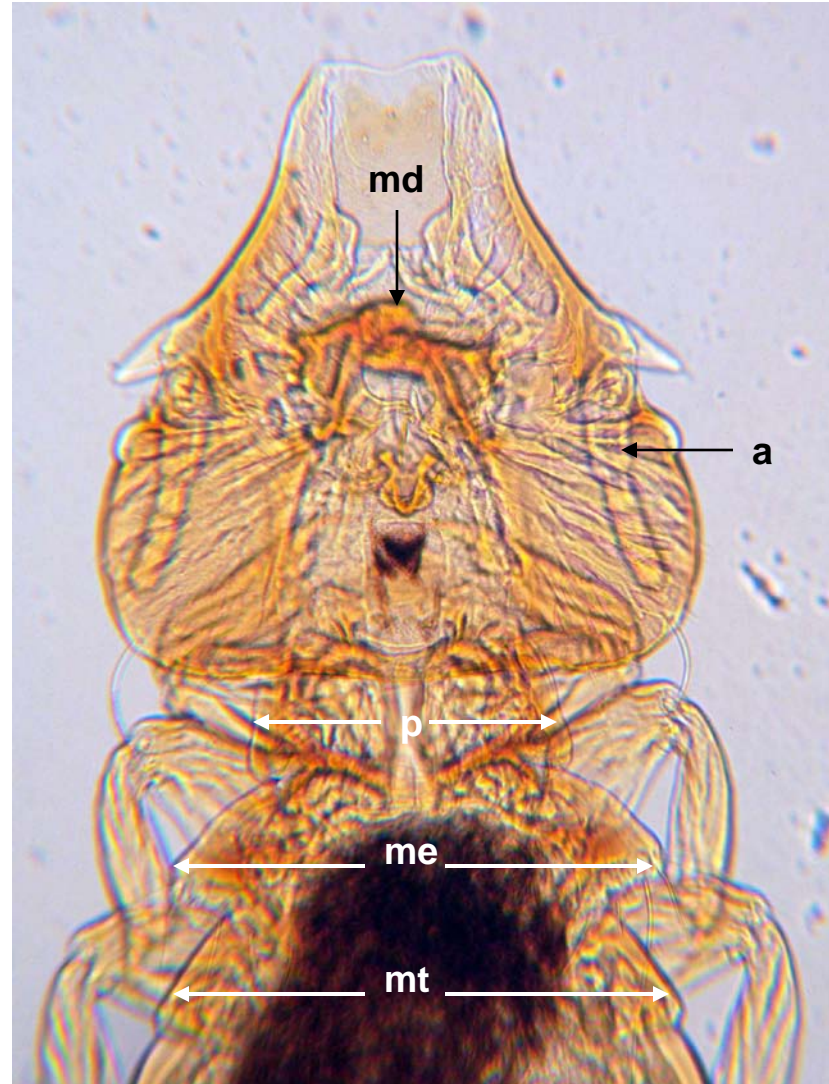
Philopterus sp.; female, head. Legend: a, antenna; md, mandibles).



Phlopterus sp.; female, posterior (box in A enlarged in B).



Philopterus migratorii, female. Legend: a, antenna; e, egg; md, mandibles; me, mesothorax; mt, metathorax; p, prothorax.



Total body length = 1.76 mm